

**WALL BEDS
SMARTER THAN THE AVERAGE BED**



WHAT IS A WALL BED?

A wall bed is a pull-down bed that is stored, hidden, vertically or horizontally against a wall.

We commonly refer to wall beds as Murphy Beds.

American inventor, William Lawrence Murphy, designed a steel frame system that could lift a full-sized mattress up to be hidden behind cupboard doors.

His idea came from a desire to have his sweetheart visit him in his studio apartment. In the early 1900s, it was forbidden for a single young lady to visit a gentleman's bedroom. Murphy used his ingenuity to find a way around this by tucking his bed, out of sight, into a cupboard, converting his bedroom into a living room. Like magic bedroom gone!

Today, we are using the same system to add versatility to rooms where floor space may be tight. A room that has one function during the day, like a home office, converts to a comfortable bedroom with a full sized bed within seconds. Wall beds provide a bed solution and space reclaimed for other uses.

Creative by Design uses the Murphy Bed system to ensure a quality product that will last many years.

WHY CHOOSE A WALL BED?

Whether you live in a studio apartment, have a family home or are ready to downsize, with a wall bed, you are able to host without compromising on your everyday living space.

A wall bed will allow you to transform your rumpus, living or family room into a comfortable temporary bedroom for guests or kids' sleepovers. A sofa bed or futon might do the job, but they can be bulky and uncomfortable, whereas the wall bed gives the comfort of a conventional bed but tucks away during the day out of sight. You shouldn't have to choose between comfort and having room to move.

Wall beds give you options, they can be customised and configured to suit various uses and you have a range of bed sizes to choose from.

Cleverly designed wall beds will include cabinetry that gives you valuable storage space and will enhance the style of a room. You may build an entire media centre surrounding your wall bed.

A wall bed can be designed to include a day desk which can be used while the bed is tucked away and then automatically folds under the bed frame without needing to unplug or remove items from the desktop.

Your wall bed is more than somewhere to sleep, it becomes the central focus of your beautifully fitted furniture.



HORIZONTAL OR VERTICAL?



Wall beds are versatile and can be a core element in the design of a room as well as functional. You have the option of a vertical or a horizontal bed.

The vertical wall bed flips up on the wall from the bed head. When down, the bed comes out to the centre of the room, with the full length of the bed taking up floor space.

A horizontal wall bed flips up to the wall on its side, along the length of the bed. When down, the bed takes up less floor space and more wall space.

Things to consider:

- Room size – this is key in deciding between a horizontal or vertical wall bed.
- Room function – how do you want to use the room?
- Layout – consider other furniture that needs to be in the room.
- Cabinetry – do you need shelves or a day desk? A wall bed can stand alone as one cabinet or be designed to fill a whole wall.
- Bed size – are you after a single, double or queen?

Horizontal wall bed measurement chart

Single 1187mm high x 2028mm wide
Double 1567mm high x 2028mm wide
Queen 1721mm high x 2155mm wide

Vertical wall bed measurement chart

Single 2087mm high x 1123mm wide
Double 2087mm high x 1505mm wide
Queen 2215mm high x 1658mm wide



CHOOSING THE RIGHT MATTRESS

Wall beds can be as comfortable as a traditional stand-alone bed. Wall bed mattresses do not compromise on comfort, unlike a sofa bed's pull-out foam mattress.

You can choose a mattress that suits your individual needs, whether you want a firm or softer feel.

Three things to keep in mind when choosing your mattress:

- The mattress design must withstand long term upright storage.
- A pocket coil mattress is preferable. Latex mattresses are too heavy and the weight will make them sag when upright.
- The height of the mattress should not exceed 300mm.

SPRINGS OR GAS LIFT?



Wall beds use either a spring or gas lift mechanism to lift the bed into the cabinet.

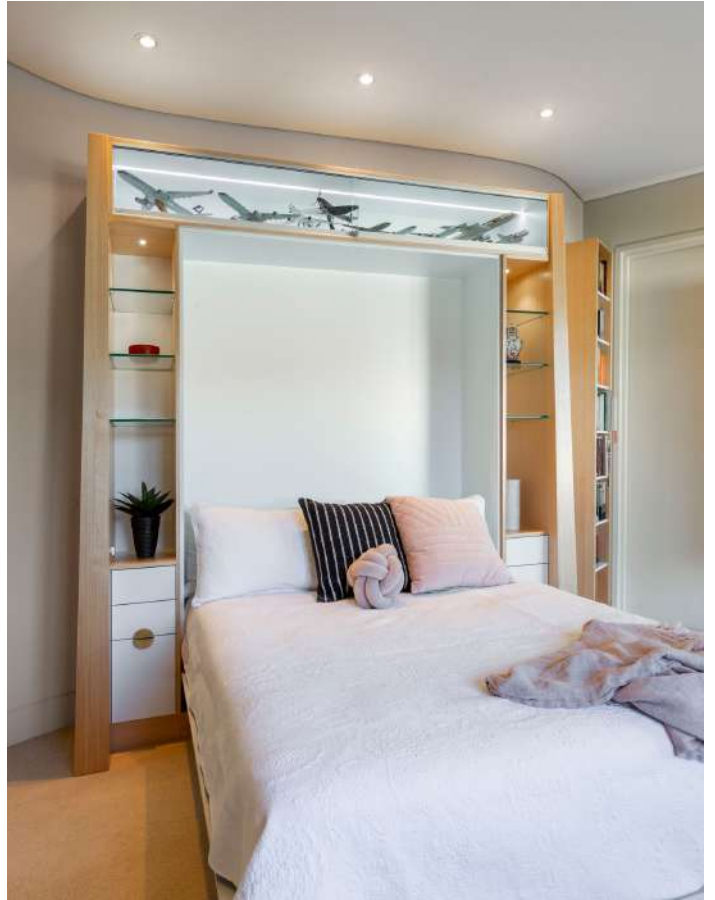
At Creative by Design our wall beds all use the spring mechanism.

Designed for everyday use in residential or commercial settings, the spring lift mechanism is durable, light and easy to lift. Varying spring combinations ensure the right tension and balance for all bed sizes. The springs may be adjusted over time to ensure continuing smooth functionality.

The gas lift system uses gas pressure to lift the bed up into the cabinet. With a quiet and smooth action, the bed lifts effortlessly. The system is often visible in the wall bed cabinet. Over time, the mechanism may weaken and require replacement.

Both systems are effective, and a decision should not be based on spring or gas lift. Our preference for spring was based on durability.

AN ALL-IN-ONE SOLUTION



We've talked about the versatility that a wall bed gives and how it extends the use of a room.

A Creative by Design wall bed integrates any number of useful add-ons, giving you an all-in-one solution.

Smart design will include practical options such as bedside tables, a bed head, shelving, and options for power and digital connections.

Lighting is integrated into our wall bed designs. Careful consideration is given to placement to ensure appropriate light for reading as well as LED strip lighting to highlight displayed items.

Your wall bed 'all-in-one solution' integrates seamlessly into your home décor, saving you the need to shop around for those extras needed to create a comfortable bedroom space.



WORKING FROM HOME

These days, most families need a home office as hybrid working arrangements increasingly become a way of modern living. The need for a quiet place away from the bustle of family life is a necessity. This can mean sacrificing valuable space in the home such as a guest room for visiting family and friends.

A wall bed can give greater flexibility to a room and its use. You no longer have to scramble, turning your office upside down, removing furniture and other items to make room for a mattress on the floor. The inclusion of a wall bed will make it guest-ready in seconds and folds out of sight when not in use, allowing work to continue.

This is no blow-up mattress or bulky sofa bed - a wall bed will transform your home office into a cosy bedroom with a full-sized bed for your guests to sleep comfortably.



ADD A LITTLE CHARACTER

Often, when people think wall bed, they imagine a bed that tucks away into a melamine box. At Creative by Design, we can help you to create a wall bed that is both functional and a design feature for your room.

You are only limited by your imagination.

Carefully designed joinery surrounding the wall bed can cover an entire wall with shelving options that are both practical storage solutions and funky displays for treasured items. The bed integrates into the cabinetry hiding away seamlessly.

Standard white is not the only option. You can add different finishes to fit in with your existing décor or new fit. The use of colour will bring this beautifully fitted furniture to life and reflect your personality.

A unique look can be achieved to disguise your very practical wall bed solution by creating a mural using wallpaper art, or feature artwork from artists, pattern designers or photographers that inspire you.

So now, it's not just a bland guest room that sits vacant between visits. Your wall bed allows you to create a beautiful room that doubles as a guest room and library or office or playroom or craft room or...



SUSTAINABILITY MATTERS

We take sustainability seriously at Creative by Design.

Our choice of suppliers and materials is based on a common respect for the environment. We, along with our suppliers, are committed to minimising our carbon footprint.

We aim to work with materials that are environmentally preferred, and low emission.

Our designers will discuss sustainable options that minimise harm to the environment with you.





Our Design Philosophy

At Creative by Design, we are committed to helping you maximise the use of your home space.

We understand the importance of integrating the functionality of a wall bed seamlessly into an existing living area.

Clever design and creative thinking deliver solutions that are both beautiful and versatile.

Our designers listen to you, and work with you, to ensure you are comfortable throughout the design, manufacture and installation journey.

Our clients are at the heart of everything we do.

Schedule a design consultation by calling us on 1300 366 222.